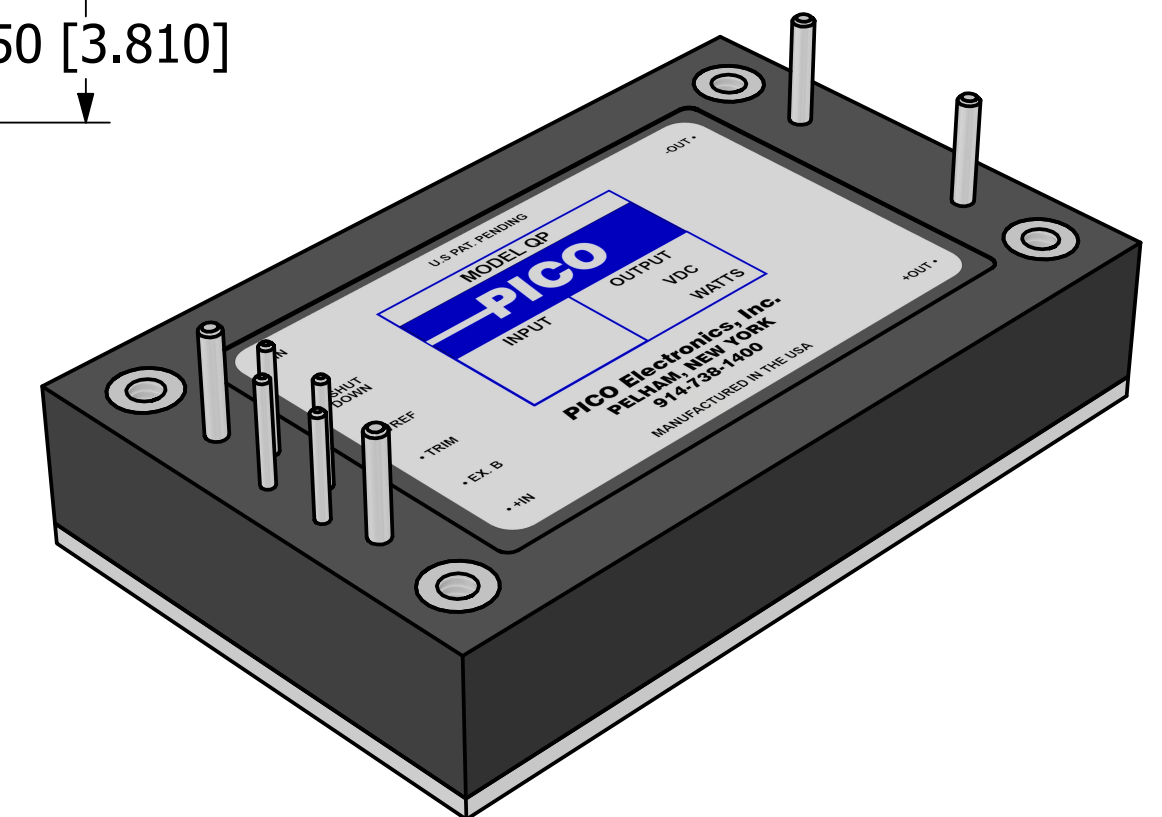
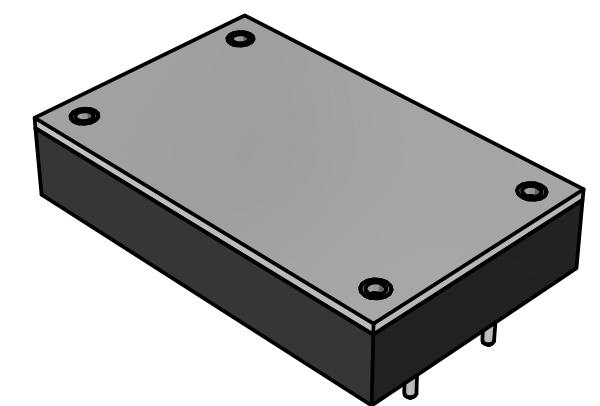
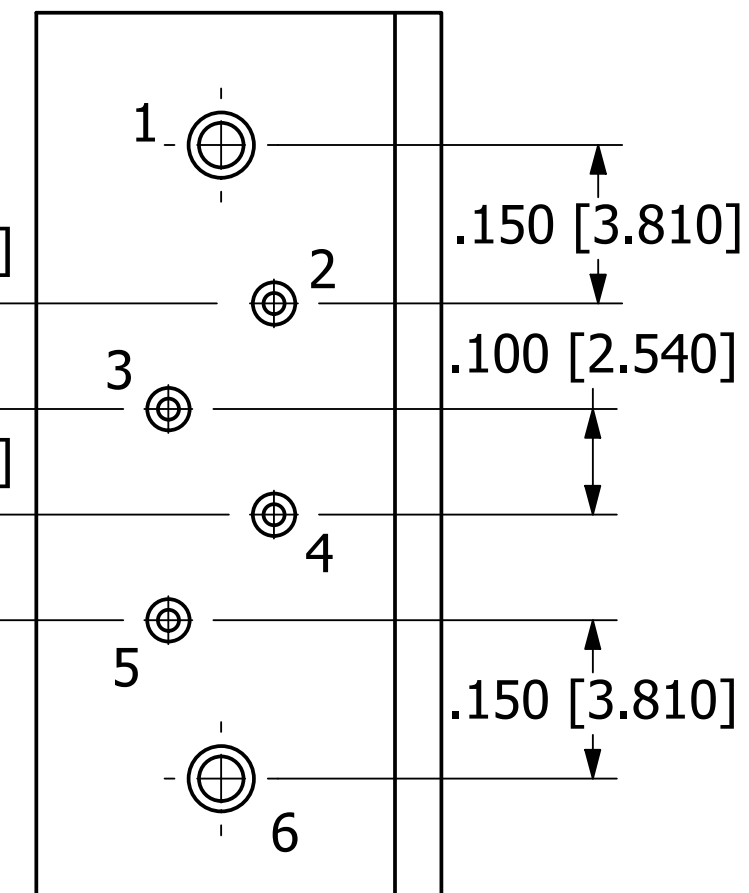


a. ALL DIMENSIONS ARE IN INCHES, [] = MM
b. RECOMMENDED TORQUE FOR MOUNTING SCREWS: 3-5 INCH-LBS

Technical drawing of a rectangular plate. The overall width is 2.500 [63.500]. The thickness of the plate is .500 [12.700]. The thickness of the mounting flange is .325 [8.255]. The drawing shows the plate with mounting holes and a flange.



DRAWN	P.PALUCH	<div><div>PICO</div><div>Electronics</div></div> <div>143 Sparks Ave Village of Pelham, NY 10803</div>			
CHECKED	H. VIDAURRE				
QA					
MFG		SERIES QP			
APPROVED					
REVISION DATE	06/06/2023	SIZE C		DWG NO	REV 1
		SCALE	NTS	www.picoelectronics.com	

PROPRIETARY AND CONFIDENTIAL
THE INFORMATION CONTAINED IN THIS DRAWING IS THE SOLE PROPERTY OF
PICO ELECTRONICS INC. ANY REPRODUCTION IN PART OR AS A WHOLE WITHOUT THE WRITTEN
PERMISSION OF PICO ELECTRONICS INC. IS PROHIBITED